

YUN YANG

Fire Safety Equipment

THE BROADCASTING SYSTEM



ISO 9001
Quality Certified



New Taipei City

- Linkou Universiade
- Linkou Power Plant



Taipei

- Taipei City Hospital
- Shuang Ho Hospital



Taoyuan

- Armfulcare hospital
- Lion Pencil • Nangang Tire



Taichung

- Lin Shin Hospital
- Veterans General Hospital
- Asia University Hospital



Chiayi

- Chiayi Cultural and Creative Industries Park
- Chiayi County Machohou Industry Park



Tainan

- An-Nan Hospital
- ChiMei Museum
- Epistar Corporation
- ASML Taiwan
- Ten Drum Cultural park



Penghu

- Sheraton Hotels
- Penghu Hospital Ministry Of Health And Welfare



Kinmen

- Kinmen Kaoliang Liquor Factory
- Kinmen County Waterworks



INDEX

1. Emergency / General Purpose Broadcast Series

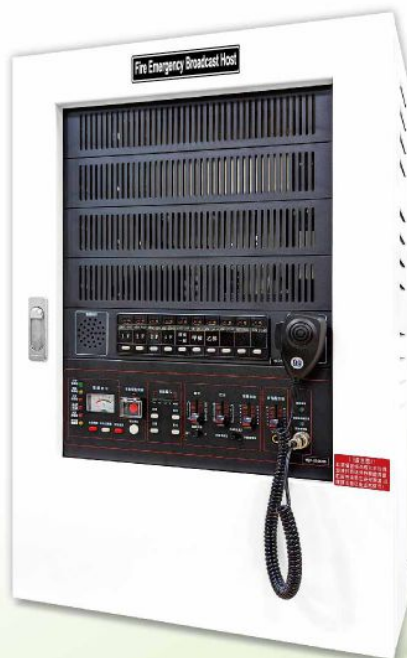
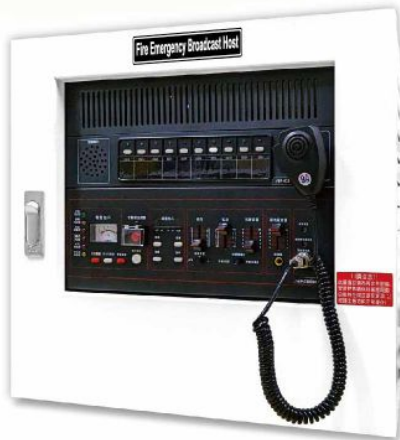
YEP-E Digital Emergency/General Purpose Broadcast System.....	01~02
Two-in-One / Three-in-One Integrated Series.....	03
YEP-E2 Digital LCD Emergency/General Purpose Broadcast System.....	04
Diagram of YEP-E2 Digital LCD Emergency/General Purpose Broadcast System.....	05~06
YEP-E2 Digital LCD Emergency/General Purpose Broadcast System Equipment Series.....	07~08
Digital Type Category D Power Amplifier Series.....	09~10
Voice Evacuation Equipment Series.....	11~12
Modularized Pre-mixing Amplifier Machine Chassis.....	13
GUI Computer / Emergency Broadcast Annunciator System.....	14
Emergency Telephone Series.....	15
Remote Microphone Series.....	16

2. Speaker

Speaker.....	17~20
--------------	-------

YEP-E

Digital Emergency/Commercial
Broadcast System (Wall Mount / Rack Cabinet)



YEP-E

Digital Emergency/General Purpose Broadcast System



Features

- Digital broadcasting system control panel for emergencies and business operations
- Input: Emergency/Daily integrated functionMicrophone: -40dBV 600Ω unbalanced
Timer (time notification): 0dBV 600Ω unbalanced
Pre-service use amplifier: 0dBV 600Ω balanced
Emergency audio input: 0dBV 600Ω unbalanced
- Output: Emergency/Daily integrated service output: 0dBV 15Ω balanced
- Emergency alarm tone: English audio alarm tone (Can add multi language audio according to on site requirements)
- (First signal tone, second signal tone, inducted alarm broadcast, fire alarm broadcast, non-fire broadcast)
- Built-in three-stage fire alarm module: Male voice/fire alarms; Female voice/early warning, false alarms, alarm lifted.
- Priority mode: Can select between level prioritization, first order prioritization, post order prioritization modes
- Built-in hand-held emergency microphone with echo suppression
- Can connect to up to 8 LCD remote microphone (optional)
- Can connect to up to 4 annunciator syncing (optional)
- Can write in pre-set contents on the computer into the EEPROM memory
- The function with broadcast all zone
- The battery protection function: In standby power mode if the battery voltage drops below 13V, it will stop discharging to protect battery life.
- Expandable with complete line of accessories: CD, DVD, MP3, Radio, Bluetooth, telephone broadcast interface, timer, high-level sound source input interface, RS232 interface board, work shift bell player, remote microphone, annunciator, as well as emergency telephone (optional)

Dimensions

Box Type		Wall Mount								
No. of Zones	All Zone/5L	All Zone/5L	All Zone	5L/10L	20L	5L/10L/15L	30L/40L	20L/30L	50L/60L	40L/50L
Watts	100W~200W	300W	400W~500W	100W~500W	100W~500W	600W~1000W	100W~500W	600W~1000W	100W~500W	600W~1000W
H(mm)	400	450	450		600		700		800	
W(mm)	300	480	480		480		480		480	
D(mm)	120	140	140		180		180		180	

Box Type		Wall Mount				
No. of Zones	70L	60L	80L/90L	70L/80L	100L/110L	90L/100L
Watts	100W~500W	600W~1000W	100W~500W	600W~1000W	100W~500W	600W~1000W
H(mm)	1020		1195		1350	
W(mm)	480		480		480	
D(mm)	180		180		180	

Two-in-One / Three-in-One Integrated Series



Features

- Fully functional:
The fire alarm control panel and broadcast host are designed specifically for the circuit and amplifier wattages required. The two systems can be installed in combination with products from various other series as needed, and each comes with its own operation panel. Both machines conform to Taiwanese regulations.
- Space saver:
The two-in-one machine saves space and is well-suited for tight spaces.
- Environmentally Friendly and Energy Efficient:
With the control panel and broadcast host in a single body, it's energy efficient and environmentally friendly.
- Save on materials and labor:
The interlocking relay lines have been set up between the control panel and the broadcast equipment during the production process, no extra relay wiring is required. The installation process at the site is simplified while wiring and labor costs are effectively reduced.
- Fine appearance:
The appearance has been made uniform, with a large circuit zone plate displaying the building, floor, circuit type and broadcast zone.

YEP-E2

Digital LCD Emergency/General Purpose Broadcast System

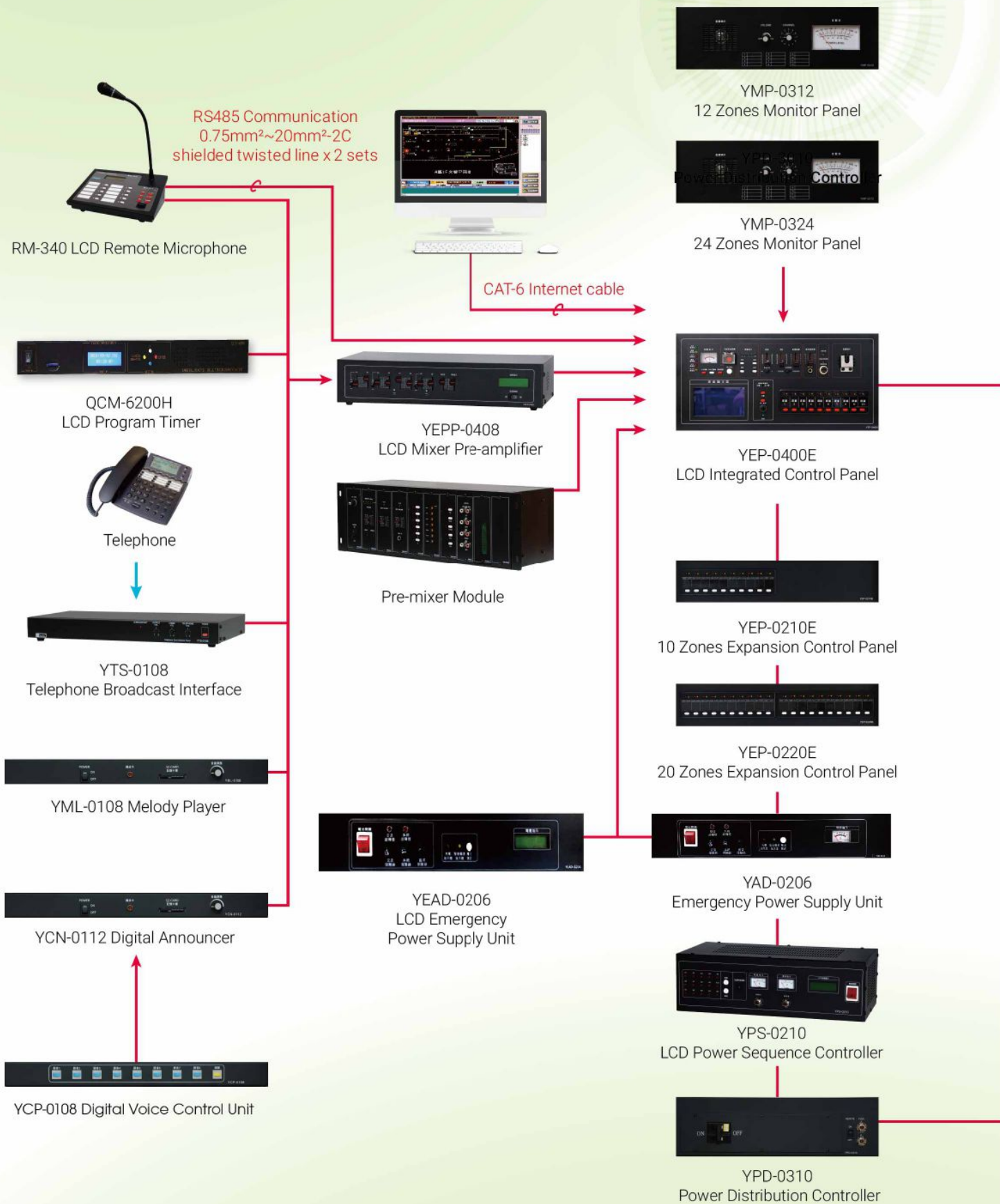
Features

- Equipped with LCD display to allow reading of broadcast status and operation guidance. Voice guidance function guides operation with voice instructions during an emergency
- Emergency alarm/all floor voice alarm (English voice alarm. Multiple languages can be added upon request)
- Built-in three-stage fire alarm voice broadcast module (first signal tone, second signal tone, voice warning, fire alarm voice message, non-fire voice messages, ending voice message)
- Interlocked fire alarm modes (Choose between interlocked and all-zone interlocked mode)
- Switch between regular broadcast/fire alarm broadcast by timer or manually
- Output control: individual, 10-zone group, and all-zone. (expandable based on actual requirements).
- Priority settings (Priority Level 1> Level 2> Level 3> Level 4> Level 5> Level 6; Priority type setting within each priority level: none, first-come-first-serve, interrupt priority, individual priority)
- Action record settings: Save, confirm, read, delete records as well as adjust time setting
- Built in English recording software for emergency broadcast system (Displays all fire alarm actions and up to 2000 fire alarm records. System parameters can be set and modified from the fire alarm control unit panel)
- Indicator lights: fire alarm activation indicator (flashing red), circuit interlocked indicator (always on red), speaker circuit failure (yellow flash)
- Rotary switch used for function selection and setting on the main unit
- Built-in four-tone prelude/postlude playback keys and microphone auxiliary input port
- Large indicator light with the word "FIRE"/Horizontal output volume indicator LED/Manual switch for emergency fire alarm voice message and tone/Emergency reset/Fire alarm broadcast button/non-fire message broadcast button
- All-zone broadcast button, broadcast reset button (for all-zone broadcast)
- Equipped with a communication port for connection to an Yun Yang Addressable Fire Alarm Control Panel relay communication system, avoiding the need for a separate alarm relay interface equipment, reducing wiring, labor, and cost.
- Connection to GUI PC via TCP/IP network
- Up to 8 digital LCD remote microphones can be connected
- Up to 4 broadcast annunciators can be connected
- Can be used with emergency/business broadcast GUI system, with various selectable functions (optional)
- Rack cabinet type broadcasting host with cable tray for wiring from the front. Cables are quickly and conveniently accessible through the front door.
- Function with broadcasting all zone



YEP-E2

Diagram of Digital LCD Emergency/General Purpose Broadcast System





YDP-0402
Digital Temperature Display Blower Panel (3U)



DPAL-0225A/0230A/0240A/
0250A/02100A
Digital Class-D Power Amplifier
(low voltage 2U)



DPAL-0230A/0240A/0250A/02100A
LCD & Acoustic Pressure Indicator
Digital Class-D Power Amplifier



DPAL-0230A/0240A/0250A/02100A
LCD & Acoustic Pressure Indicator
Digital Class-D Power Amplifier
(CE+BSMI+RoHS)



DPAL-0230B / DPAL-0240B/ DPAL-0250B
Dual Priority LCD & Acoustic Pressure
Indicator Digital Class-D Power Amplifier
(CE+BSMI+RoHS)



YADU-0324
Amplifier Fault Indicating Panel
(with Monitor Function)



YDS-0302E
Emergency Power Supply Unit



YJP-0301E
Emergency/General
Purpose Junction Panel



YJP-0310E
10 Zones Expansion
Junction Panel



YJP-0320E
20 Zones Expansion
Junction Panel



Teaching
Amplifier



Mixer Panel



Microphone



Volume
Controller



YSP-610AS
Pendant
Two-way Speaker



Volume
Controller



YSP-606B
Ceiling Speaker



YSP-832EA
Horn Speaker



YSP-606A
Wall-mount Speaker



YEP-0400E LCD Integrated Control Panel (5U)

- Equipped with 10-zone group and 10 zone circuits (Max:340 zone)
- LCD graphic dot matrix LCD size 240 × 128, Displays graphics
- Voice guidance function guides operation with voice instructions during an emergency
- Equipped with LCD display to allow reading of broadcast status and operation guidance.
- Emergency alarm :English voice alarm. (Multiple languages can be added upon request)
- All floor voice alarm: basic English. (Multiple languages can be added upon request)
- Built-in three-stage fire alarm module: Male voice/fire alarms; Female voice/early warning, false alarms, alarm lifted.
- Interlocked fire alarm modes :Choose between interlocked and all-zone interlocked mode
- Switch between regular broadcast/fire alarm broadcast by timer or manually
- Fire alarm /non-fire message broadcast button
- Built-in English recording software for emergency broadcast system (Displays all fire alarm actions and up to 2000 fire alarm records.
- System parameters can be set and modified from the fire alarm control unit panel)
- Dimensions : 222(H) × 479(W)×200(D)mm



YJP-0301E Integrated Junction Panel (4U)

- To be used with the Voice Evacuation system's LCD power amplifier
- Fitted with 8 backup control terminals (Settings: Service RM, Telephone broadcast, BGM)
- Fitted with emergency remote control terminals, remote service control terminals, power connection terminals, external control output/input terminals
- Dimensions : 178(H)× 479(W)× 80(D)mm



YEP-0210E 10 Circuit Expansion Control Panel (2U)

- Can extend up to 10 speaker control circuits
- Floor interlocked fire response can be designated by the panel keys
- Each set of speaker circuit are fitted with are dual color LED lights, so that the circuit interlocks and other corresponding information (such as malfunctions) can be displayed
- Fitted with service partition selection function
- Each set of speaker circuit panels are left with a space to label the speaker circuit's name or code
- Dimensions: 89(H)× 479(W)× 200(D)mm



YEP-0220E 20 Circuit Expansion Control Panel (2U)

- Can extend up to 20 speaker control circuits
- Floor interlocked fire response can be designated by the panel keys
- Each set of speaker circuit are fitted with are dual-color LED lights, so that the circuit interlocks and other corresponding information (such as malfunctions) can be displayed
- Fitted with service partition selection function
- Each set of speaker circuit panels are left with a space to label the speaker circuit's name or code
- Dimensions: 89(H)× 479(W)× 200(D)mm



YJP-0310E 10 Circuit Extension Wire Onfiguration Panel (4U)

- Can be used with the 10 circuit expansion control panel
- Can expand up to 10 speaker output circuits
- Speaker circuit: R (emergency), N (normal), and C (common)
- Fitted with 10 circuit fire alarm control input
- Circuit short circuit protection: Fitted with 10 sets of manually resettable short circuit detection circuits
- Dimensions: 178(H)× 480(W)× 190(D)mm



YJP-0320E 20 Circuit Extension Wire Onfiguration Panel (4U)

- Can be used with the 20 circuit expansion control panel
- Can expand up to 20 speaker output circuits
- Fitted with 20 circuit fire alarm control input
- Speaker circuit: R (emergency), N (normal), and C (common)
- Circuit short circuit protection: Fitted with 10 sets of manually resettable short circuit detection circuits
- Dimensions: 178(H)× 480(W)× 190(D)mm

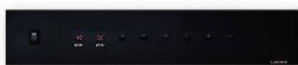


YAD-0206 Emergency Power Supply (2U)

YEAD-0206 Emergency Power Supply (LCD)

- To be used with a voice evacuation system master
- Input power:AC110V × 50/60Hz
- Output voltage:DC24V
- Fitted with a DC voltage meter
- Fitted with a DC emergency power and charging indicating lamp
- Fitted with a battery abnormality indicating lamp
- 1 set of built-in storage battery
- Dimensions : 133(H)× 479(W)× 260(D)mm





YMP-0312 | YMP-0324 12/24 Circuit Monitoring Panel (3U)

- Can monitor up to 12/24 different sets of amplifiers and or speaker output circuit
- Output indicating lamp: VU scale -42 to +8dB (adjustable)
- Power supply used: AC110V/ DC24V
- Large pointer type VU watt meter head, fitted with lights so that it is easy to read
- Includes 5W monitoring speaker, equipped with an anti-feedback function
- Includes monitor volume control knob, allowing the monitoring volume to be adjusted any time
- Dimensions: 133(H) x 445(W) x 65(D)mm
- Large LCD display (optional)

YDP-0401 Blower Panel

- Power: DC24V
- Three action modes: Open / Automatic / Close
- Temperature control range: 38°C ~ 45°C (Manual or Automatic mode can be selected, manual mode can continue to run the blower, automatic mode can set the blower to run and stop at certain temperature)

Dimensions: 133(H) x 445(W) x 70(D)mm

YDP-0402 Digital Temperature Display Blower Panel

- Power: DC24V
- Three action modes: Open / Automatic / Close
- 4 Digit LED Display, can display the current temperature (0-999.9°C)
- Ventilation: 45ml/min

- Blower Speed: 2700RPM
- Blower 2 pcs, can be expanded to 10 groups
- Dimensions: 133(H) x 445(W) x 70(D)mm

YDS-0302E Emergency power supply (3U)

- Input power: AC 110V • 50/60Hz
- Output power: DC24V
- Fitted with a DC voltage meter
- Fitted with DC emergency power supply and charging indicating lamp

- With DC and AC abnormality indicator lights
- Built-in battery
- Dimensions: 133(H) x 445(W) x 70(D)mm

YPD-0310 Power Distribution Controller (3U)

- Power requirements: AC 110V • 50/60Hz
- Maximum current capacity: 60A
- Fitted with a remote power supply control function

- Output power: 8 interlocked AC110V output socket, 5 non-interlocked AC110V output socket
- Dimensions: 133(H) x 479(W) x 220(D)mm

YPS-0210 LCD Power Sequence Controller (3U)

- Power: AC110V 50/60Hz 60A max
- Output power: 5 sets of non-interlocked three-pronged AC plug, 10 sets of sequence interlocked initiated three-pronged AC plug

- Fitted with an AC voltmeter and an AC ammeter
- Fitted with a sequential initiation time adjustment knob and dot matrix English/graphic LCD display
- Dimensions: 133(H) x 430(W) x 220(D)mm

YADU-0232 Amplifier Fault Indicating Lamp Panel (2U)

- Equipped with a malfunction/replacement indicating lamp
- Can plan up to 8 amplifier malfunction detectors to correlate with 1 amplifier's backup function
- When the amplifier malfunctions, the backup driver will automatically replace the current work and ensure that the broadcast system is operating normally.

- Uses AC110V 60Hz or DC24V voltages
- Input: Connected power amplifier output (high impedance line 100V)
- Malfunction detection display: Power amplifier malfunction detector indicating lamp: On
- Malfunction detection output: Relay contacts closed, pressure resistant: 30VDC, current capacity: 1A
- Dimensions: 89(H) x 479(W) x 195(D)mm

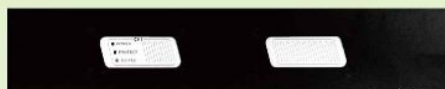
YADU-0324 Amplifier Fault Indicating Panel (3U)

- Fitted with 2 sets of malfunction/replacement indicating lamps
- Fitted with 2 sets of backup amplifier monitor functions and 1 speaker, 1 Acoustic pressure meter, 1 volume adjustment knob
- Can plan for 8 amplifier malfunction detectors to correspond with one backup amplifier Or for 4 amplifier detectors corresponding to one backup amplifier

- When the amplifier malfunctions, the backup driver will automatically replace the current work and ensure that the broadcast system is operating normally.
- Input: Connected power amplifier output (high impedance line 100V)
- Malfunction detection display: Power amplifier malfunction detector indicating lamp: On
- Malfunction detection output: Relay contacts closed, pressure resistant: 30VDC, current capacity: 1A
- Dimensions: 133(H) x 480(W) x 200(D)mm

D Power Amplifier

NEW



Digital Class-D Power Amplifier

Features

- Small size, light weight, can greatly reduce installation space.
- High load efficiency, stable power output, with power saving and environmental features.
- Complete protection function, can detect output short circuit, over loading, over heating and other states.
- Built in intricate feedback circuit, can ensure low distortion and complete re-presentation of the audio.
- Each audio channel has two sets of audio source input nodes, can be used in series connection between equipment.
- Cooling fan 50x50x15mm : Automatically activates when temperature reaches 38°C

Specifications

Item	Specifications				
Model number	DPAL-0225A	DPAL-0230A	DPAL-0240A	DPAL-0250A	DPAL-02100A
Output power (RMS)	250W (MAX)	300W (MAX)	400W (MAX)	500W (MAX)	500Wx2 (MAX)
Power consumption	250W (MAX)	412W (MAX)	533W (MAX)	624W (MAX)	1248W (MAX)
Output impedance	40Ω / 100V	33.3Ω / 100V	25Ω / 100V	20Ω / 100V	20Ω / 100V
Power requirements	DC48V				
Input impedance	6.4KΩ/unbalanced				
Input sensitivity	1V RMS/6.4KΩ, 6.4mm Phone Jack				
Distortion rate	0.1% 1/3 rated load				
S/N ratio	95dB				
Frequency response	60Hz~20KHz (-3dB,0dB)				
Indicating lamps	POWER.PROTECT.OUTPUT				
Protection	Output short circuit protection, overload protection, overheating protection				
Dimensions	479(W) × 87.9(H) × 300(D)mm (2U)				

NEW



LCD & Acoustic Pressure Indicator Digital Class-D Power Amplifier

Features

- Small size, light weight, can greatly reduce installation space.
- High load efficiency, stable power output, with power saving and environmental features.
- Complete protection function, can detect output short circuit, over loading, over heating and other states.
- Built in intricate feedback circuit, can ensure low distortion and complete re-presentation of the audio.
- Each audio channel has two sets of audio source input nodes, can be used in series connection between equipment.
- Cooling fan 50x50x15mm ; Automatically activates when temperature reaches 38°C

Specifications

Item	Specifications			
Model number	DPAL-0230A	DPAL-0240A	DPAL-0250A	DPAL-02100A
Output power(RMS)	300W (MAX)	400W (MAX)	500W (MAX)	500Wx2 (MAX)
Power consumption	412W (MAX)	533W (MAX)	624W (MAX)	1248W (MAX)
Output impedance	33.3Ω / 100V	25Ω / 100V	20Ω / 100V	20Ω / 100V
Power requirements	DC48V			
Input impedance	6.4KΩ/unbalanced			
Input sensitivity	1V RMS/6.4KΩ, 6.4mm Phone Jack			
Distortion rate	0.1% 1/3 rated load			
S/N ratio	95dB			
Frequency response	60Hz~20KHz (-3dB,0dB)			
Indicating lamps	POWER.PROTECT.OUTPUT			
Protection	Output short circuit protection, overload protection, overheating protection			
Dimensions	479(W) × 87.9(H) × 300(D)mm (2U)			

NEW

LCD & Acoustic Pressure Indicator Digital Class-D Power Amplifier (CE+BSMI+RoHS certificate)

Features

- Small size, light weight, can greatly reduce installation space.
- High load efficiency, stable power output, with power saving and environmental features.
- Complete protection function, can detect output short circuit, over loading, over heating and other states.
- Built in intricate feedback circuit, can ensure low distortion and complete re-presentation of the audio.
- Each audio channel has two sets of audio source input nodes, can be used in series connection between equipment.
- Cooling fan 50x50x15mm : Automatically activates when temperature reaches 38°C
- (1) 122 x 32 LCD display, Can display AMP abnormal status
- (2) Acoustic pressure indicator (VU table)
- Has obtained the Certificate of the Registration of Product Certification from the Ministry of Economic Affairs Bureau of Standards, Metrology and Inspection based on the standards CNS13439 and CNS15663 (Section 5)

Specifications

Item	Specifications			
Model number	DPAL-0230A	DPAL-0240A	DPAL-0250A	DPAL-02100A
Output power (RMS)	300W (MAX)	400W (MAX)	500W (MAX)	500Wx2 (MAX)
Power consumption	412W (MAX)	533W (MAX)	624W (MAX)	1248W (MAX)
Output impedance	33.3Ω / 100V	25Ω / 100V	20Ω / 100V	20Ω / 100V
Power requirements	DC48V			
Input impedance	6.4KΩ/unbalanced			
Input sensitivity	1V RMS/6.4KΩ, 6.4mm Phone Jack			
Distortion rate	0.1% 1/3 rated load			
S/N ratio	95dB			
Frequency response	60Hz~20KHz (-3dB,0dB)			
Indicating lamps	POWER.PEAK.PROTECT.OUTPUT			
Protection	Output short circuit protection, overload protection, overheating protection			
Dimensions	479(W) × 87.9(H) × 300(D)mm (2U)			

NEW

Dual Priority LCD & Acoustic Pressure Indicator Digital Class-D Power Amplifier (CE+BSMI+RoHS certificate)

Features

- Small size, light weight, can greatly reduce installation space.
- High load efficiency, stable power output, with power saving and environmental features.
- Complete protection function, can detect output short circuit, over loading, over heating and other states.
- Built in intricate feedback circuit, can ensure low distortion and complete re-presentation of the audio.
- Each audio channel has two sets of audio source input nodes, can be used in series connection between equipment.
- Cooling fan 50x50x15mm ; Automatically activates when temperature reaches 38°C
- (1) 122 x 32 LCD display, Can display AMP abnormal status
- (2) Acoustic pressure indicator (VU table)
- Has obtained the Certificate of the Registration of Product Certification from the Ministry of Economic Affairs Bureau of Standards, Metrology and Inspection based on the standards CNS15598-1, CNS15663 (Section 5) and CNS15963

Specifications

Item	Specifications		
Model number	DPAL-0230B	DPAL-0240B	DPAL-0250B
Output power (RMS)	300W (MAX)	400W (MAX)	500W (MAX)
Power consumption	412W (MAX)	533W (MAX)	624W (MAX)
Output impedance	33.3Ω / 100V	25Ω / 100V	20Ω / 100V
Power requirements	DC48V		
Input impedance	6.4KΩ/unbalanced		
Input sensitivity	1V RMS/6.4KΩ, 6.4mm Phone Jack		
Distortion rate	0.1% 1/3 rated load		
S/N ratio	95dB		
Frequency response	60Hz~20KHz (-3dB,0dB)		
Indicating lamps	POWER.PEAK.PROTECT.OUTPUT		
Protection	Output short circuit protection, overload protection, overheating protection		
Dimensions	479(W) × 87.9(H) × 300(D)mm (2U)		



YCN-0112 Digital Voice Synthesizer Player (1U)

- Applicable to fire or disaster emergency broadcasts, regular broadcasts, or even speakers of vehicles and others
- Digital processing and EEPROM memory, no need for tapes
- Vocal frequency range: 20Hz~20KHz
- Distortion rate of less than 1%
- Output line level: $\pm 6\text{dBV}$, 8 Ω or 0dBV, 600 Ω
- Sampling rate: 8KHZ / 11KHZ / 16KHZ / 22KHZ / 24KHZ / 32KHZ / 44.1KHZ
- Used with memory card (SD card)
- Dimensions: 42(H) \times 480(W) \times 162(D)mm



YML-0108 Melody Player (1U)

- Can play pre-recorded contents within the memory card via the melody generator
- Power requirements AC110V 50/60Hz, DC24V 0.3A
- Output 0dBV 600 Ω unbalanced
- Control circuit: 8 circuits (dry contact)
- Control contact during playback: 1 circuit
- Used with memory card (SD card)
- Dimensions: 42(H) \times 480(W) \times 162(D)mm



YCP-0108 Digital Voice Controller (1U)

- Can be used with a voice synthesis player, to be used as an option for pre-recorded content playback
- Fitted with voice content marking and LED indicating lamp action instructions
- Straightforward control keys, simple, convenient and does not require training
- Fitted with recorded content protection functions to prevent improper operation from deleting recorded audio
- Dimensions: 42(H) \times 480(W) \times 162(D)mm



YTS-0108 Telephone Broadcast Interface (1U)

- Includes a DTMF-type telephone interface, which can directly call or initiate telephone broadcasting functions via the switchboard
- Fitted with 8 sets of relay, which can then be coupled with a digital broadcast host to control 8 varying areas and its corresponding settings to conduct telephone broadcasts
- The panel has an action indicating lamp, which turns on when the telephone is in use
- Output impedance: 600 Ω Input impedance: 20K Ω
- Maximum output/power level: +10dBm
- Frequency response: 80 - 15KHZ(+/-3d)
- Power: AC110V, 220V 50/60-HZ or DC24V
- Dimensions: 44.5(H) \times 435(W) \times 200(D)mm



QCM-6200H LCD Digital Timer Music Clock (1U)

- Equipped with English LCD
- Build-in speaker and the volume can be adjusted
- Use SD card to store audio source
- Two groups A/B, can be set up for use in summer/winter schedules.
- 8 sets/16 sets output ports available
- Each group can have 7 sets of weekly schedules and 5 sets of specific days, totaling 12 sets of schedules.
- Each scheduled day can accommodate up to 80 entries.
- Schedule editing can be done manually by computer or system.
- All schedules can be set and controlled via the LCD panel.
- Output contacts and music playback can be manually or automatically activated.
- Dimensions: 44(H) \times 425(W) \times 300(D)mm



YIM-0208 LCD matrix processor 8x8 (2U)

- English LCD display, easy to setting
- One-unit can operate 8x8 matrix, while being able to expand to up a maximum of 4 units for a 16x16 matrix
- Fitted with 16 sets of programmable initiation points, 8 sets of programmable output contacts. It can simulate operation of CD or tape, radio, voice player, and other audio sources. Activation points can be prioritized with options such as first-selected priority, second-selected priority, and level priority.
- Using the SELECT button to set which simplifies the operation and setting.
- Fitted with a set of hi-lite matrix motion model display
- Power: AC110V, 220V 50/60HZ or DC24V



YPA-30 Teaching Amplifier Set (Front and Rear Separated Type)

- Teaching use amplifier output power : 30W
- Frequency response:20HZ - 20KHZ
- Power supply used:AC110V
- Has an integrated function (for emergency/daily use) along with a built-in priority selection function, Can use the same speaker with the voice evacuation broadcast system
- Under normal circumstances, teachers can use it amplify their voice or for the school PA system's input and output
- The fronts and rears of teaching amplifiers are design to be separated so that it is easy to install and maintain
- When the microphone and audio source is connected, the amplifier unit will automatically activate, and deactivates when they are disconnected
- Equipped with a speaker overload trip function
- The pre-mixer panel can be fixed in the standard single-box, and placed under the center of the blackboard so that it can be easily used and maintained
- The panel is equipped with one set of microphone ports, one set of audio ports and two sets of independent volume knob, that can also be used as two sets of microphone or audio source inputs and or used to connect multiple panels in series



YEPP-0408/YPP-0408

LCD pre-mixing amplifier (2U)/ Pre-mixing amplifier (3U)

- Equipped with Chinese/ English language LCD.
- Power requirements: AC110V, 220V 50/60HZ or DC24V.
- 3 sets of group input (Total of 8 inputs, each with an independent level control)
- 2 sets of microphone inputs and 2 sets of auxiliary inputs.
- 2 sets of linear output, 1 set of audio recording output.
- Group input has a built in priority function, group input priority 1>2>3.
- Prioritized control contacts and remotely initiated contact
- High and low audio quality control ($\pm 10\text{dB}$ at 100Hz and 10KHz).
- Frequency response:20-20,000Hz $\pm 1\text{dB}$.
- S/N: 60dB or higher.
- Distortion rate:1%.
- Dimensions: 89(H) \times 435(W) \times 200(D)mm / 134(H) \times 442(W) \times 600(D)mm
- Has obtained the Certificate of the Registration of Product Certification from the Ministry of Economic Affairs Bureau of Standards, Metrology and Inspection based on standards CNS13439 (electro magnetic compatibility test) and CNS14408 (electrical safety standard) along with the relevant certificate.



Modularized Pre-mixing Amplifier Machine(4U)

① YCR-0410 Modularized Pre-mixing Amplifier Machine Chassis

- Can be coupled with YM series modules to form a multi-functioning pre-mixing amplifier
- The front panel can accommodate up to 10 modules
- Can be coupled with an interface module (YM-01IF) to expand multiple sets of chassis in series
- Module has a common bus design, allowing to be inserted at any location
- Dimensions: 156(H)x 484(W)x 163(D)mm

② YM-01PS Power Supply Module

- Provided for YCR-0410 series modules
- Includes short circuit overload protection and voltage regulator circuits
- Output voltage:DC 24V
- Output current:1A
- Input voltage:AC 110V
- Fuse:20mm 1A
- Dimensions: 147(H)x 43(W)x 137(D)mm

③ YM-01LA Linear Amplification Module

- Uses a slider bar for volume control
- Combines all input module signals and outputs the audio after mixing
- Can conduct multiple outputs in accordance with the corresponding module's priority control
- Fitted with bass and treble audio quality control, and provides strip type LED signal output display, displaying the output level status
- Can drive multiple power amplifiers
- Power requirements:DC 24V/85mA
- Input sensitivity:-20dBV
- Output level:0dBV
- Output impedance:600Ω
- Frequency response:20Hz~20KHz ±1dB
- Distortion rate: Less than 0.1% (1KHz)
- Noise level: -102dB or less (20Hz ~ 20KHz)
- Tone control: Bass (100Hz) ± 10dB, treble (10KHz) ± 10dB
- Output:TRS JACKx1
- Dimensions: 147(H)x 43(W)x117(D)mm

④ YM-01LI Linear/Auxiliary Input Module

- Balanced input, sensitivity is adjustable between 0dBV or -20dBV
- Has a priority setting function
- Static level control x1
- Slider bar volume control
- "In use" LED indicating lamp x1
- Input impedance 100kΩ (balanced/unbalanced) can be adjusted
- Output impedance:10KΩ
- Distortion rate: Less than 0.1% (1KHz sine wave)
- Frequency response:20Hz~20KHz ±1dB
- Noise level:(20Hz~20KHz)-106dB
- Sound filter (Decays 12dB at 100Hz)
- Input port:TRS JACK x1
- Power requirements:DC 24V/22mA
- Dimensions: 147(H)x 43(W)x 159(D)mm

⑤ YM-01MI Microphone Input Module

- Can choose a balanced type MIC input level or linear input level
- MIC input is fitted with a compressor function to prevent distortion
- Fitted with prioritization setting functions
- Equipped with "In use" LED indicating lamp
- Slide bar volume control x1
- "In use" LED indicating lamp x1
- Input sensitivity/impedance -60dBV/600Ω 0dBV/100KΩ
- Output level/impedance:-20dBV 10KΩ
- Frequency response:20~20KHz ±1dB
- Distortion rate: Less than 0.1% (1KHz sine wave)
- Noise level:(20Hz~20KHz/600Ω)-126dBV
- Audio filter: (Decays 12dB at 100Hz)
- Input port:TRS JACKx1
- Power requirements:DC 24V/40mA
- Dimensions: 147(H)x 43(W)x 117(D)mm



⑥ YM-01BD Ground Leak Detection Module

- Each detection module can monitor 6 sets of speakers and can be expanded further according to requirements
- Connects to each speaker circuits to detect whether there is any ground leaks
- Each set of detection circuit is equipped with LED indicating lamps to show the current status and provide relay contact point terminals
- Power requirements:DC 24V/60mA
- Input: Each module board has 6 circuit monitor inputs
- Output: 1 set of relay dry contact (3A 30V)
- Switch: 6 sets of test keys
- Message display: Ground leak indication LEDx6 (red)
- Ground impedance: Less than 50KΩ
- Dimensions: 147(H)x 43(W)x 145(D)mm

⑦ YM-01EQ Music Interval Equalization Module

- Semi-fixed level control, so that any default equalization settings cannot be arbitrarily changed
- Busy line control will activate when the microphone is in a broadcast
- Fitted with a LED indicating lamp to display whether the equalizer is on or off (IN/OFF)
- Fitted with 7 sets of 1/1 music interval equalizer, able to suppress feedback, adjust the indoor equalization and acoustic quality control
- Equalizer center frequency 125Hz/250Hz/500Hz/1KHz/2KHz/4KHz/8KHz adjustable range ± 12dB
- Power requirements:DC 24V/55mA
- Input sensitivity:-20dBV
- Output level:-20dBV
- Frequency response:20Hz~20KHz ±1dB
- Distortion rate: Less than 0.1% (1KHz)
- Dimensions: 147(H)x 43(W)x 117(D)mm

⑧ YM-01AS Music Source Selection Module

- Provides CD, cassette, radio and other audio input options
- Must be used with YM-AIP module
- Number of input sets: 4 sets
- Number of output sets: 1 set
- Selection switch: 5 sets (select button x4 / reset button x1)
- Output level control: 1 set
- Static Level Control: 1 set
- Power requirements:DC 24V/20mA
- Dimensions: 147(H)x 43(W)x 117(D)mm

⑨ YM-AIP Music Source Input Module

- Allows CD, cassette, radio and other types of audio input
- Needs to be used with the music source selection module
- Input method: R, L stereo mixed input
- Input sensitivity and impedance:20dBV/10KΩ
- Frequency response:20~20KHz ±0.5dB
- Distortion rate: 20~20KHz, less than 0.1%
- Noise level:(20~20KHz/600Ω) -100dBV
- Has a mute function
- Input port: Stereo RCA jack x4
- Dimensions: 147(H)x 43(W)x68(D)mm

⑩ YM-01IF Interface Module

- In accordance with system requirements, if the chassis module slot is full then interface modules should be applied for connection in series
- Can expand up to two module chassis or more
- Dimensions: 147(H)x 43(W)x 35(D)mm



GUI Computer for the Digital Broadcasting System for Emergencies and Business

Features

- The GUI computer for the digital broadcasting system for emergencies and business operations can broadcast to any area via the graphical control system, and also apply pre-recorded audio as its broadcast source.
- Fitted with an electronic map display function: Displays broadcast activity on the map.
- Multi-language control interface, users can choose which language to use.
- Simple main panel settings: Table type circuit display window and setting controls by clicking.
- Each switch, circuit, fire alarm input, wiring panel node can be designated with English names, allowing for convenient settings and inspections.
- Fitted with GUI systems broadcast functions: The GUI console includes the all-zone key, the group key, reset key, area partition key, emergency initiation key, fire alarm broadcast key, non-fire broadcast key.
- GUI systems are fitted with functions such as main frame parameter setting editing, remote controlled broadcast main frame, event records, and event printing.
- The GUI system is equipped with a control procedure simulation function, allowing the user to rapidly familiarize with the various control functions, enhancing the user's speed to react.
- The GUI system can connect to over 8 broadcast control panels, controlling over 2720 circuits of total number of zones while being able to record over 20000 incidents for each broadcast control panel.
- The computer window is equipped with a one-click function setting for backup contact points, priority rights, interlocked systems and audio input/output.
- Data such as image files, status settings, interlocked settings can be edited by the PC and written into a memory card, where the GUI computer can retrieve the simplified process.
- The right side of the GUI system is the function control tool bar, the main window can display messages based on the type of warnings while a digital map pops up. The bottom of the window is the real-time alarm display bar.
- This equipment must be used with the YEP-E2 series broadcast host.



Emergency Broadcast Annunciator System

Features

- To be used with YEP-E2/YEP-E series emergency broadcast systems. Can display/control/set settings/monitor in sync where it functions just as the voice evacuation system's main panel.
- The model of the annunciator system used depends on the model number of the main emergency broadcast system installed

Emergency Telephone Activation



YET-0300E Emergency Telephone Host

- Number of loop 10L~300L (Can be customized based on requirements)
- Each loop has call / block flash control function, can choose to re-dial / disconnect loop
- Loop relay function, can be connected with the emergency broadcast main host
- Power output indicator function
- Power requirements: DC24V • 380mA
- Dimensions: 132.35(H) x 479(W) x 200(D) mm



YET-0210E / YET-0220E 10/20 Loop Emergency Telephone Control Panel

- Can extend up to 10/20 emergency telephone activation devices
- Call blocking
- Four core wiring
- Power Requirements: DC24V, 200mA / 360mA
- Dimensions: 87.9(H) x 479(W) x 200(D) mm



YTJP-0310E / YTJP-0320E 10/20 Emergency Telephone Wiring Panel

- Must be paired with YET-0300E
- Power Requirements: DC24V 240mA / 450mA
- In units of 10L / 20L
- Activation phone contact 10/20 sets, activation relay contact 10/20 sets
- Dimensions: 176.8(H) x 479(W) x 80(D) mm



Emergency Telephone Switchboard

- Model: Desktop type/Wall-mounted/Cabinet type
- Working voltage: DC24V
- Operational modes: Detection via electronic circuit to start the system
- Material: ABS plastic material
- Number of connections: Two-wire wiring (Wiring with polarity)
- Number of circuits: Circuit capacity can be customized based on requirements
- Caller alert function
- Power output indicator function
- Loop relay function, can be connected with the emergency broadcast main host
- Call blocking function, each loop is equipped with initiation/indicator light while calling function, can choose to connect/disconnect/re-dial circuits



YET-A Emergency Telephone Activation Device (Exposed)

YET-B Emergency Telephone Activation Device (Embedded)

- Working voltage: DC12V
- Operational modes: Detection via electronic circuit to start the system
- Material: Exposed - ABS plastic material
Embedded - PO metal plate
- Accessories: Indicating lamp/emergency telephone stand/microphone/wiring terminal block
- Number of connections:
Two-wire wiring (Wiring with polarity)
Indicating lamp requires independent wiring
- Dimension:
Exposed - 282(H) x 100(W) x 55(D) mm
Embedded - 305(H) x 124(W) x 80(D) mm



YEW-2 (Two-Wire) / YEW-4 (Four-Wire) Emergency Activation Telephone

- Working voltage: DC 12V
- Operational modes: Detection via electronic circuit to start the system
- Material: ABS plastic material
- Accessories: Emergency telephone stand/terminal block
- Number of connections: Two-wire wiring (Wiring with polarity)
- Dimension : 212(H) x 63(W) x 50(D) mm



RM-01

All-zone Remote Microphone (Compatible with Various Product Series)

- Group call function
- Capacitive gooseneck microphone for high sensitivity
- Preamplifier with compression limit function
- Broadcast volume and pre ude/postlude can be adjusted individually
- Power requirements DC24V 150mA
- Output: 0 ~ + 6dBV (balanced)
- Output impedance: 600Ω
- Maximum connection distance from control panel: 1 km
- Wiring: 1 × 2-core wire with isolation and 2 × 1.6mm single core wires



RM-50A | RM-120 | RM-340

LCD Remote Microphone

- English LCD display of system circuit and group configuration
- Capable of controlling 50 zones/10/20~60 groups
- Capable of controlling 160 zones/60 groups
- Controls up to 340 zones /60 groups
- Contains up/down 4 ring electronic music ringtone with adjustable volume
- Microphone ring light turns on automatically when broadcasting
- Auxiliary input for playing background music
- Automatically determines status. Comes with line busy indicator, fire indicator, and fault indicator
- Power requirements: DC24V • 150mA
- Output: 0dBV 600Ω, balanced
- Auxiliary input: -22dBV, 47KΩ, unbalanced
- Line impedance below 8Ω
- Largest distance 0.8km
- Wiring: Two pairs of 1.25mm² cross section 2-core shielded twisted line with isolating copper mesh for lengths under 0.8km
- Dimensions : 90 (H) × 225 (W) × 165 (D) mm



RM-34C

Color Touch Type Remote Microphone

- 10.4-inch LCD full color touchscreen.
- Remotely activate and select functions on the broadcast host including groups, all-zone activation, reset, individual zones, fire alarm manual test switch, fire alarm state selection on host and non-fire false alarm states from touchscreen.
- Status message display and simultaneous display of fire and fault messages. Zone names can be edited and displayed on the touchscreen.
- Network function for connecting to broadcast host via fixed IP, DHCP or PPPoE.
- Output: 0 dBV 600 Ω, unbalanced
- Contact: Zero > non-voltage contact × 1 set (contact capacity 1A)
- Power: DC24V • 980Ma
- Dimensions : 105.6 (H) × 340 (W) × 249 (D) mm



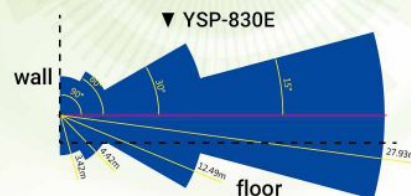
YSP-830E Horn Speaker

- 9.7 inch horn speaker
- Rated power: 30W(can select from 3.75W, 7.5W, 15W, 30W)
- Rated impedance: 100V · 3.75W(2.64KΩ)/7.5W(1.32KΩ) 15W(560Ω)/30W(330Ω)
- Rated frequency range: 330Hz~6KHz
- Dust Proof/ Water Proof Grade: IP66
- Dimensions : Φ238 × 287 (D)mm

Limit to Q, directional coefficient of angle of separation

0°~15°	15°~30°	30°~60°	60°~90°	N
20	4	0.5	0.3	102

Horn Speaker Wide Range Area
Sound Pressure Level: dB(1W)

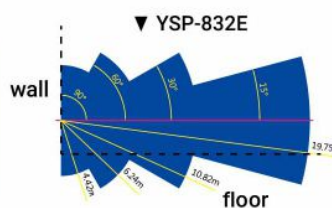


YSP-832E Waterproof Horn Speaker

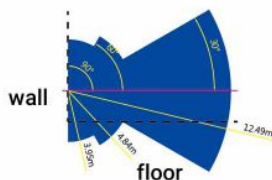
- 8 inch horn speaker
- Rated power: 32W(can select from 8W, 16W, 32W)
- Rated impedance: 100V · 8W(1.25KΩ)/16W(625Ω)/ 32W(313Ω)
- Rated frequency range: 400Hz~4KHz
- Dust Proof/ Water Proof Grade: IP66
- Dimensions : Φ210× 280 (D)mm

Limit to Q, directional coefficient of angle of separation

0°~15°	15°~30°	30°~60°	60°~90°	M
10	3	1	0.5	105



▼ YFSP-3540LA-D



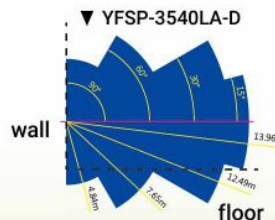
Limit to Q, directional coefficient of angle of separation

Horizontal installation			
0°~15°	15°~30°	30°~60°	60°~90°
5	4	1.5	0.6

YFSP-3540LA-D

Column Array Speaker

- Rated input: 40W(can select from 5W / 10W/20W / 40W)
- Rated impedance: 100V, 5W (2KΩ)/10W (1KΩ) 20W (500Ω) or 40W (250Ω)
- Rated frequency range: 170Hz~18KHz
- Dust proof / Water Proof grade: IP55
- Dimensions in mm: 615 (H)× 98 (W)× 90 (D) mm



Limit to Q, directional coefficient of angle of separation

Vertical installation			
0°~15°	15°~30°	30°~60°	60°~90°
5	4	1.5	0.6

X
93.2

The sound field map covers the appearance: the shape remains unchanged, and the distance is for reference only (calculated according to the location of the data to change the size ratio)



YSP-1650EI

Waterproof Horn Speaker

- 6.4 inch horn speaker
- Rated power: 10W(can select from 2.5W/5W/10W)
- Rated impedance:100V,2.5W(4K Ω),5W(2K Ω),10W(1K Ω)
- Rated frequency range:500Hz~7KHz
- Maximum acoustic pressure: 114dB/1m, L class
- Includes matching transformer, integrated
- Dus: proof/Water proof grade:IP55
- Material: Aluminum alloy
- Exterior dimensions: Φ 163 × 182 (D) mm



YSP-832EA

Waterproof Horn Speaker

- 8 inch horn speaker
- Rated input: 32W(can select from 8W/16W/32W)
- Rated impedance:100V,8W(1.25K Ω),16W(625 Ω),32W(313 Ω)
- Rated frequency range:400Hz~4KHz
- Maximum acoustic pressure: 118dB/1m, L class
- Dus: proof/Water proof grade:IP65
- Material: Aluminum alloy
- Dimensions: Φ 210 × 280 (D)mm



YSP-610AS

Coaxial Array Wall-mounted Speaker

- 8 inch coaxial array speaker (full range 8" treble 1.8")
- Rated input: 10W(can select from 3W/5W/6W/10W)
- Rated impedance:100V, 3W(3.3 K Ω) / 5W(2 K Ω)/6W(1.7 K Ω) / 10W(1 K Ω)
- Rated frequency range:100Hz~10KHz
- Maximum acoustic pressure: 103dB/1m, L class
- Material/thickness: ABS fireproof material/thickness 3.5mm
- Panel material: Fine metal woven mesh
- Exterior dimensions: 240 (H) × 240 (W) × 120 (D)mm



YSP-610BS

Coaxial Array Ceiling-mounted Speaker

- 8 inch coaxial array speaker (full range 8" treble 1.8")
- Rated input: 10W(can select from 3W/5W/6W/10W)
- Rated impedance:100V, 3W(3.3 K Ω) / 5W(2 K Ω)/ 6W(1.7 K Ω) / 10W(1 K Ω)
- Rated frequency range:100Hz~10KHz
- Maximum acoustic pressure: 103dB/1m, L class
- Material/thickness: ABS fireproof material/thickness 3.2mm
- Panel material: Fine metal woven mesh
- Exterior dimensions in mm: Φ 260 × 91.5 (D)mm
- Installation hole size: Φ 230 mm

YSP-0403A | YSP-0506A YSP-0405A | YSP-0506A1

Wall-mounted Speaker



- 4/4/4/5 inch moving coil cone speaker
- Rated input: 3W / 5W / 4W or 6W / 4W or 6W
- Rated impedance: 100V, 3W (3.3KΩ) / 5W (2KΩ)
4W (2.5KΩ) or 6W (1.7KΩ)
4W (2.5KΩ) or 6W (1.7KΩ)
- Rated frequency range: 200Hz~12KHz
- Output acoustic pressure: Above 92dB (1m) L class
- Material/thickness: ABS plastic material/thickness 3mm
- Exterior dimensions : 190 (H) × 192 (W) × 95 (D)mm

YSP-616A

Wall-mounted Speaker



- 6.5 inch moving coil cone speaker
- Rated input: 6W (can select from 3W/5W/6W)
- Rated impedance: 100V, 3W (3.3KΩ), 5W (2KΩ), 6W (1.7KΩ)
- Rated frequency range: 100Hz~14KHz
- Maximum acoustic pressure: 98dB/1m, L class
- Material/thickness: ABS plastic material/thickness 2mm
- Exterior dimensions: 242.5(H) × 252.5(W) × 124.5(D)mm

YSP-606A

Wall-mounted Speaker



- 6.5 inch moving coil cone speaker
- Rated input: 6W (can select from 3W/5W/6W)
- Rated impedance: 100V, 3W (3.3 KΩ), 5W (2 KΩ), 6W (1.7 KΩ)
- Rated frequency range: 110Hz~16KHz
- Maximum acoustic pressure: 99dB/1m, L class
- Material/thickness: ABS plastic material/thickness 3.5mm
- Panel material: Fine metal woven mesh
- Exterior dimensions : 240 (H) × 240 (W) × 120 (D)mm

YSP-610A

Wall-mounted Speaker



- 8 inch moving coil cone speaker
- Rated input: 10W (can select from 6W/8W/10W)
- Rated impedance: 100V, 6W (1.7 KΩ), 8W (1.3 KΩ), 10W (1 KΩ)
- Rated frequency range: 100Hz~18KHz
- Maximum acoustic pressure: 104dB/1m, L class
- Material/thickness: ABS plastic material/thickness 3.5mm
- Panel material: Fine metal woven mesh
- Exterior dimensions: 240 (H) × 240 (W) × 120 (D)mm

YSP-0403D | YSP-0506D YSP-0405D | YSP-0506D1

Surface-mounted Speaker



- 4/4/4/5 inch moving coil cone speaker
- Rated input: 3W / 5W / 4W or 6W / 4W or 6W
- Rated impedance: 100V, 3W (3.3KΩ) / 5W (2KΩ)
4W (2.5KΩ) or 6W (1.7KΩ)
4W (2.5KΩ) or 6W (1.7KΩ)
- Rated frequency range: 200Hz~12KHz
- Output acoustic pressure: Above 92dB (1m) L class
- Material/thickness: ABS plastic material/thickness 2mm
- Exterior dimensions : Φ182 × 66.5 (D)mm

YSP-606D

Surface-mount/ Ceiling-mount Speaker



- 6.5 inch moving coil cone speaker
- Rated input: 6W (can select from 3W/5W/6W)
- Rated impedance: 100V, 3W (3.3KΩ), 5W (2KΩ), 6W (1.7KΩ)
- Rated frequency range: 100Hz~14KHz
- Maximum acoustic pressure: 101dB/1m, L class
- Material/thickness: ABS plastic material/thickness 2mm
- Installation Fixture method: Surface-mounted/ceiling-mount
ed with additional protective cover and fixture
- Exterior dimensions: Φ250 × 102 (D) mm
- Installation hole size: Φ225 mm

YSP-0403B | YSP-0506B
YSP-0405B | YSP-0506B1
Ceiling-mounted Speaker



- 4/4/4/5 inch moving coil cone speaker
- Rated input: 3W / 5W / 4W or 6W / 4W or 6W
- Rated impedance: 100V, 3W (3.3KΩ) / 5W (2KΩ)
4W (2.5KΩ) or 6W (1.7KΩ)
4W (2.5KΩ) or 6W (1.7KΩ)
- Rated frequency range: 200Hz~12KHz
- Output acoustic pressure: Above 92dB (1m) L class
- Material/thickness: ABS plastic material/thickness 3mm
- Exterior dimensions in mm: Φ200 × 56 (D)mm
- Installation hole size: Φ175 mm

YSP-616B
Ceiling-mounted Speaker



- 6.5 inch moving coil cone speaker
- Rated input: 6W (can select from 3W/5W/6W)
- Rated impedance: 100V, 3W (3.3KΩ), 5W (2KΩ), 6W (1.7KΩ)
- Rated frequency range: 100Hz-14KHz
- Maximum acoustic pressure: 100dB/1m, L class
- Material/thickness: ABS plastic material/thickness 2mm
- Exterior dimensions: Φ250 × 67.5 (D)mm
- Installation hole size: Φ225 mm

YSP-606B
Ceiling-mounted Speaker



- 6.5 inch moving coil cone speaker
- Rated input: 6W (can select from 3W/5W/6W)
- Rated impedance: 100V, 3W (3.3 KΩ), 5W (2 KΩ), 6W (1.7 KΩ)
- Rated frequency range: 110Hz~16KHz
- Maximum acoustic pressure: 100dB/1m, L class
- Material/thickness: ABS plastic material/thickness 3.2mm
- Panel material: Fine metal woven mesh
- Exterior dimensions in mm: Φ260 × 77 (D)mm
- Installation hole size: Φ230 mm

YSP-810B
Ceiling-mounted Speaker



- 8 inch moving coil cone speaker
- Rated input: 10W (can select from 6W/8W/10W)
- Rated impedance: 100V, 6W (1.7 KΩ), 8W (1.3 KΩ), 10W (1 KΩ)
- Rated frequency range: 100Hz~18KHz
- Maximum acoustic pressure: 105dB/1m, L class
- Material/thickness: ABS plastic material/thickness 3.2mm
- Panel material: Fine metal woven mesh
- Exterior dimensions in mm: Φ260 × 91.5 (D)mm
- Installation hole size: Φ230 mm



YUN YANG FIRE SAFETY EQUIPMENT CO.,LTD

No. 11-4, Wanjin Rd., Dashe Dist., Kaohsiung City,
Taiwan, 81545, R.O.C

Tel : +886-7-355-1234 EXT : 265 & 208

E-mail : tty.intl@yun-yang.com.tw



2024.07 I